



Safety Barricade System



Rochester Rotational Molding, Inc.
Manufacturing Since 1988

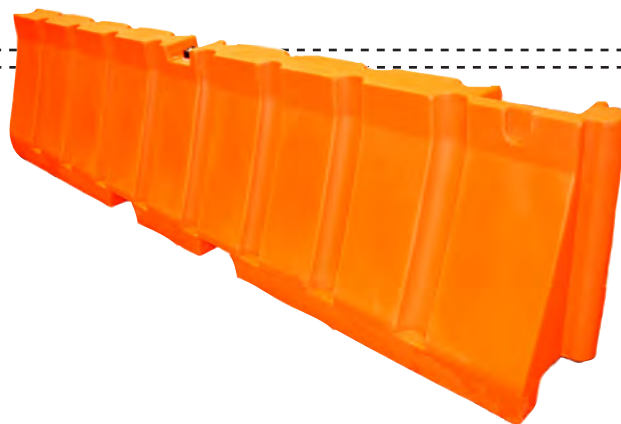




Airport Barrier

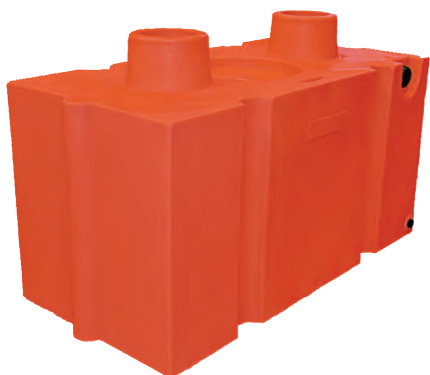
FAA Compliant 150-5370-2E

10"H x 96"L x 10"W
1008 (color code) -25



**All Purpose/Low Profile
Airport Barrier**

24"H x 96"L x 16"W
2408 (color code) -50



Full Wall Assembly Barrier

24"H x 46"L x 23"W
2304 (color code) -55



Half Wall Assembly Barrier

24"H x 23"L x 23"W
2302 (color code) -30



31" x 120" Barrier

31"H x 120"L x 24"W
3110 (color code) -155



32" Stackable Barrier

32"H x 48"L x 18"W
3204 (color code) -50



Colors available for all barriers:

Many other colors available upon request • For pictures, engineered drawings, dimensions and more details, please go to www.rrmplastics.com



Safety Barricades



32" x 72" Barrier | 32"H x 72"L x 18"W
3206 (color code) -70



24" Corner Barrier | 24"H x 16"L x 16"W
2418 (color code) - 16

32" Corner Barrier | 32"H x 18"L x 18"W
3218 (color code) - 22

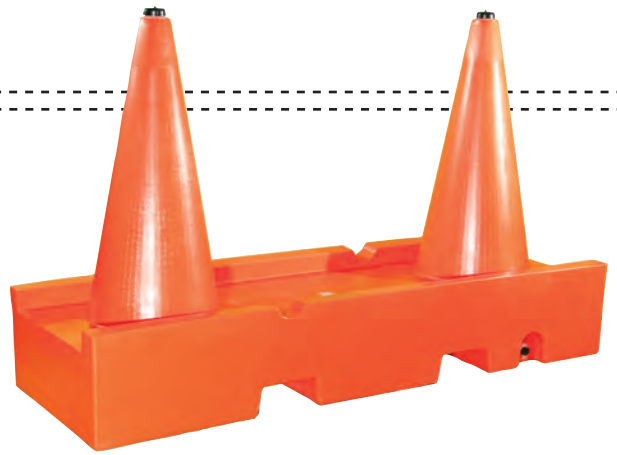
42" Corner Barrier | 42"H x 24"L x 24"W
4202 (color code) - 50



42" x 72" Barrier 100# | 42"H x 72"L x 24"W
4206 (color code) - 100

42" x 72" Barrier 130# | 42"H x 72"L x 24"W
4206 (color code) -130

42" x 72" Barrier 170# | 42"H x 72"L x 24"W
4206 (color code) -170



32" x 72" Barrier Connector | 42"H x 74"L x 24"W
32CN (color code) -70



Wedge Barrier | 42"H x 42"L x 24"W
4242 (color code) - 50



42" x 96" Barrier 150# | 42"H x 96"L x 24"W
4208 (color code) -150

42" x 96" Barrier 175# | 42"H x 96"L x 24"W
4208 (color code) -175

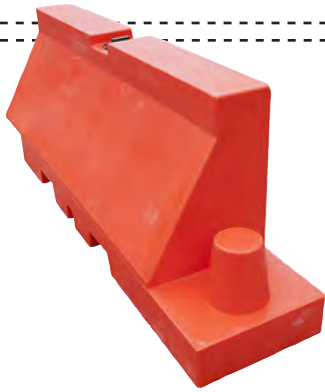
42" x 96" Barrier 200# | 42"H x 96"L x 24"W
4208 (color code) -200

42" x 96" Barrier 225# | 42"H x 96"L x 24"W
4208 (color code) -225



Containment Barrier System

Manufacturing Since 1988



29" Containment Barrier | 29"H x 84"L x 18"W
2906 (color code) -60



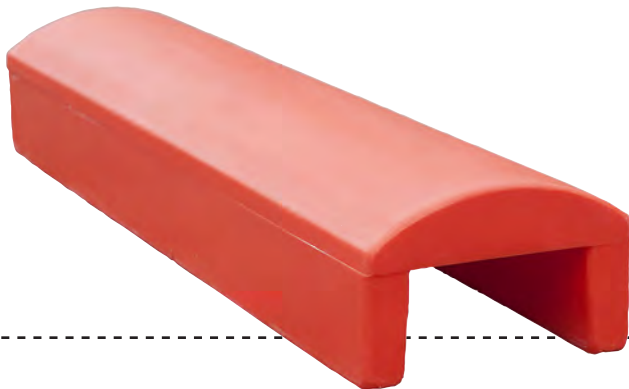
48" Containment Barrier | 48"H x 84"L x 24"W
4806 (color code) - 120



29" Containment Barrier Corner | 29"H x 30"L x 18"W
2918 (color code) -60



48" Containment Barrier Corner | 48"H x 36"L x 24"W
4802 (color code) - 55



Containment Barrier Cap | 8"H x 48"L x 12"W
CAP (color code) -55



Colors available for all barriers:

Many other colors available upon request • For pictures, engineered drawings, dimensions and more details, please go to www.rrmplastics.com



About Our Company

Manufacturing Since 1988

RRM is a manufacturer of rotationally molded plastic products. In addition to being the actual manufacturer, we are experienced in designing and fabricating molds as well as providing the best quality products available. Being the manufacturer also allows us to continually develop and advance our products as well as maintain competitive pricing and timely shipping. That, combined with our customer-oriented focus, makes us the premier barricade supplier in the industry. We place a great deal of emphasis on developing and designing solutions that make a difference. These solutions are developed in order to add quality, value, and integrity to the products that we produce for our valued customers. With our quality assurance staff, we monitor and check all products to ensure they meet the RRM seal of approval and exceed the customer's quality standards.

RRM barricades are an advanced one-piece, seamless plastic product that serves as a means of diverting, securing, and blocking the flow of oncoming pedestrians, vehicles, ballistics, and other potentially dangerous encounters. The RRM barricades are designed to be stronger and more durable than our competitors, yet still be cosmetically pleasing.

Our barricades are designed and built in several different sizes and can be used in a variety of applications.

Possible Applications:

- Force protection
- Crowd control
- Special events
- Anti-terrorism
- Gate approaches
- Border patrol
- Guard units
- Construction zones
- Airport construction
- Troop protection
- Air shows
- Traffic control
- Flight line
- Race tracks
- Parking lots
- Perimeter protection
- Site perimeter
- Recreational use
- Containment System

The RRM safety barricade system consists of specialty barricades that are superior in strength and quality to the competition. We use a superior rotationally molded process using recyclable polyethylene. This allows our barricades to be lightweight and impact resistant.

Benefits:

- Structurally sound
- Lightweight
- Durable
- Drain plugs
- Variety of colors
- Easily relocated
- Lower labor costs
- Impact resistant
- Allows for application flexibility
- UV and long-term fade resistant
- Screw-on fill caps and lids
- Withstands harsh treatment during installation and relocation
- Ballastable with water or sand
- Composed of recyclable material
- Deployable by one or two people
- Quick installation and removal
- No heavy equipment needed, but forklift accessible
- Pre-molded attachment areas for lights and flags
- Compatible with square bolt-on or round screw-in lights
- Larger barricades accept fencing
- Long lasting visual appeal
- Uniform wall thickness with thicker corners and edges



Safety Barricade System Accessories



RRM offers **Battery Powered** and **Solar Powered Lights** with either bolt-on or screw-in style attachments.



RRM offers a variety of sizes of **Flags** to meet all FAA requirements.



Flexible Containment Barrier **Liner**



RRM **Fence Panel** is custom-designed to your application. Call with specifications or requirements.



The **10" Barricade Adapter** connects the 10" x 96" Airport Barricade with other manufacturer's barricades.

RRM stocks and sells the following replacement components:

- **5" Lid**
- **2" Screw-on Lid**
- **3/4" Drain Plug**
- **High Intensity Prismatic Tape**



How much water do you put in the barriers?

- Most of our barriers now have fill lines. RRM recommends only filling the barriers to the fill line. Over filling can cause bulging.
 - 10" x 96" x 10":** fill line = 17 gallons of water; total weight including barrier = 165 lbs.
 - 24" x 96" x 16":** 7" above parting line = 50 gallons of water; total weight including barrier = 467 lbs.
 - Stackable:** fill line = 50 gallons of water; total weight including barrier = 487 lbs.
 - Wedge:** fill line = 70 gallons of water; total weight including barrier = 653 lbs.
 - 32" x 72" x 18":** 15" above parting line = 70 gallons of water; total weight including barrier = 653 lbs.
 - 42" x 72" x 24":** fill line = 100 gallons of water; total weight = 834 lbs. + barrier weight
 - 42" x 96" x 24":** 13" above parting line = 130 gallons of water; total weight = 1084 lbs. + barrier weight
 - 31" x 120" x 24":** half full = 80 gallons of water; total weight = 667 lbs. + barrier weight
 - 48" Containment Barrier:** fill line = 75 gallons of water; total weight including barrier = 745 lbs.

How do you keep the barriers from freezing in the winter?

- RRM suggests using 4-6 oz of Calcium Chloride per gallon of water, depending on the outside temperature

How many barriers fit on a standard 53' truckload?

- **10" x 96" x 10"** = 432 barriers (skidded, 36 barriers per skid)
- **24" x 96" x 16"** = 208 barriers (loaded loose)
- **32" x 72" x 18"** = 174 barriers (loaded loose)
- **42" x 72" x 24"** = 96 barriers (loaded loose)
- **42" x 96" x 24"** = 75 barriers (loaded loose)
- **31" x 120" x 24"** = 75 barriers (loaded loose)
- **29" Containment Barrier** = approx. 150 barriers (loaded loose)
- **48" Containment Barrier** = approx. 78 barriers (loaded loose)

Do your barriers accept fencing?

- Yes, RRM has two barrier sizes that accept fencing: 32" x 72" and 42" x 72" barriers only.

Do any of your barriers meet TL1, TL 2 or TL 3?

- The 42" x 72" x 24" 100# barrier has been tested and approved by the US Department of Transportation as a Test Level 2 Longitudinal Channelizing Device — AASHTO Manual for Assessing Safety Hardware Test Level 2. It was stated to be acceptable as a TL2 water filled channelizer. A letter is available with all the testing results, if further questions need answered regarding the testing.



RRM's barrier products are proudly sold through their distributors.

Distributed by:

Rochester Rotational Molding, Inc.

P.O. Box 205
1952 East Lucas Street
Rochester, IN 46975

Phone: (800) 633-9173
Fax: (574) 223-8303

www.rrmplastics.com