

TTMA-200

MASH Trailer Truck
Mounted Attenuator

MASH 2016 TESTED



1-866-994-4929 www.gregorycorpmobile.com

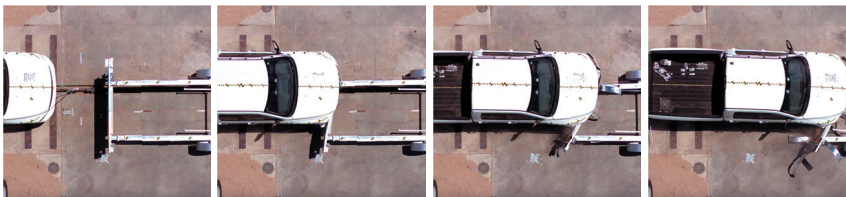
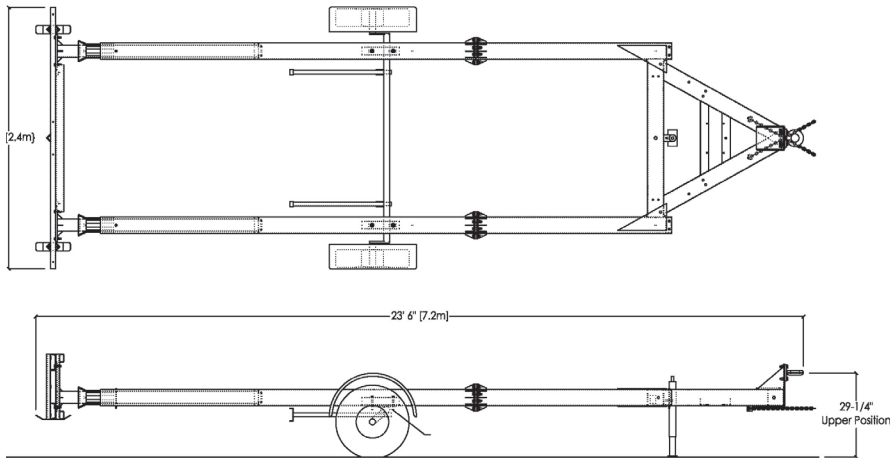
TTMA-200

Trailer Truck Mounted Attenuator

- Meets all required MASH TL-3 testing criteria.
- Patented, energy-absorbing technology simplifies design and reduces costs.
- Single-point, eight-ton minimum pintle hitch mount.
- Can be used with most support vehicles weighing 10,000 lbs. or more.
- Requires no dedicated support vehicle, and support can be changed in minutes.
- Fully galvanized and built to last against moisture and corrosion.
- Adaptable to sweeping, salting, sanding, mowing and striping operations.
- Can be equipped with optional items including arrow board stand, arrow board and hitch extensions.

SPECIFICATIONS

- W 96 in. x H 39 in. x L 23.5 ft. (W 2.4 m x H 990.6 mm x L 7.2 m).
- 1,450 lbs. (658 kg) (Approximate weight).
- 1,750 lbs. with an arrow board (794 kg) (300 lb. tongue weight) (Approximate weight).
- Eight-ton pintle hook height 19.5 in. to 32 in. (49.53 cm to 81.28 cm).
- Hot-dip galvanized.
- MASH TL-3 compliant (passed Test Level 3-50, 3-51, 3-52, 3-53).



TTMA-200

TECHNICAL HIGHLIGHTS

MASH 2016 TESTED AND PASSED

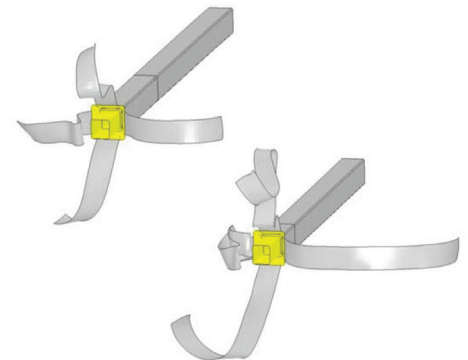
The TTMA-200 was successfully tested and passed all required MASH crash test criteria. FHWA Eligibility Letter currently pending.

PATENTED ENERGY-ABSORBING TECHNOLOGY

An oversized mandrel pushes into the smaller tube, splitting the tube into four strips of metal dissipating the impact energy. The metal strips remain with the trailer and pose no hazard to adjacent traffic. This allows the trailer frame to serve as the energy absorber, simplifying the design and reducing cost.

FLEXIBILITY

Quick attachment to any support vehicle with GVW of 10,000 lbs. or more (no maximum weight limit). Only a standard 8-ton pintle hitch is needed for towing and no vehicle modifications are required. This eliminates the need for a dedicated support vehicle.



Energy-Absorbing Technology



1-866-994-4929 www.gregorycorpmobile.com

Gregory Industries, Inc. • 4100 13th Street, SW • Canton, Ohio 44710

