

SNAP'n SAFE™ Breakaway Devices



Save Lives... Prevent Injuries



Who... Federal Highway Administration (FHWA)

What... Requires breakaway devices for sign supports.

Where... All public roads.

Why... Injuries & fatalities occur because vehicles impact sign posts.

Solution... SNAP'n SAFE Breakaway Devices.

Reduce the risk of occupant injury with **SNAP'n SAFE Breakaway Devices!** They are FHWA approved, NCHRP Report 350 compliant and available for all types of small sign supports.



DESIGNOVATIONS, INC.

7339 WILDWOOD ROAD • STILLMAN VALLEY, IL 61084

SNAP'n SAFE™

Save Money with Breakaway Devices for Sign Posts

- Repair sign posts in half the time with one person
- Use existing sign posts and anchor posts
- No special tools needed
- Less work crew exposure to traffic
- No concrete boring with surface mounts



Patented

Don't let this happen!



No Breakaway Device = High risk of occupant injury. At impact, the sign post can be forced into the windshield and roof of the vehicle.



After impact with no breakaway device, the anchor must be replaced. This translates into *more time and expense.*

When SNAP'n SAFE™ Breakaway Devices are used, the sign post breaks away and the risk of occupant injury is reduced.



TEST VEHICLE

With the SNAP'n SAFE™ Breakaway Device there is little risk of occupant injury. At vehicle impact the sign post breaks away and does not strike the vehicle's windshield or roof. Testing performed at Texas A&M and University of Nebraska.



After impact with the SNAP'n SAFE™ Breakaway Device, the anchor retains the coupler plug which can be easily removed. In addition, the anchor may be reused, *saving time and money.*



NCHRP Report 350 Compliant

Designovations now offers new technology with the SNAP'n SAFE™ Breakaway Device. Using a vehicle specified in the existing Report 350, this new technology meets and exceeds the more stringent damage levels contained in the updated NCHRP Report 350 specifications for ground mounted sign supports.



DESIGNOVATIONS, INC.

7339 WILDWOOD ROAD • STILLMAN VALLEY, IL 61084

PHONE: 888-868-6588 • FAX: 815-645-2389

EMAIL: sales@designovations.com • www.designovations.com

SNAP'n SAFE™ Breakaway Device for Square Sign Posts



PATENTED

360°
Shear
Point

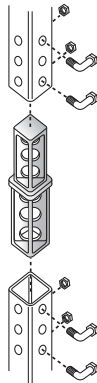


Made of cast gray iron, withstands winds of 120 mph.

Part No.	Wt.	Sign Post Size
S175	2.8 lbs.	1-3/4"
S200	3.1 lbs.	2"
S225	5 lbs.	2-1/4"
S250	6 lbs.	2-1/2"

EASY INSTALLATION: (Hardware Included)

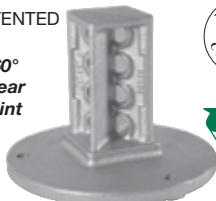
Simply insert SNAP'n SAFE Device in anchor post and bottom of sign post and assemble with (4) corner bolts.



SQUARE SURFACE MOUNT

PATENTED

360°
Shear
Point

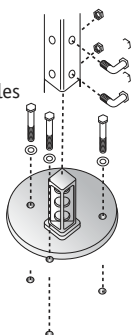


Made of cast gray iron, no concrete boring

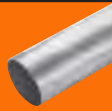
Part No.	Wt.	Sign Post Size
S175S	8 lbs.	1-3/4"
S200S	9 lbs.	2"
S225S	9.5 lbs.	2-1/4"
S250S	10 lbs.	2-1/2"

EASY INSTALLATION: (Hardware Included)

Simply drill (3) holes in concrete using the base as guide. Secure Device to concrete with (3) bolts. Attach sign post with (2) corner bolts.



SNAP'n SAFE™ Breakaway Device for Round Posts



PATENTED

360°
Shear
Point

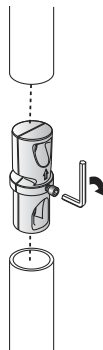


Made of cast gray iron, withstands winds of 120 mph.

Part No.	Wt.	Sign Post Size
S238R	4.6 lbs.	2-3/8" O.D. 13 thru 16 Ga. Wall
S238R8	5.4 lbs.	8 thru 12 Ga. Wall
S300R	8.0 lbs.	3" O.D. Post

EASY INSTALLATION: (Hardware Included)

Simply insert SNAP'n SAFE Device in anchor post and bottom of sign post and tighten set screw.



ROUND SURFACE MOUNT

PATENTED

360°
Shear
Point

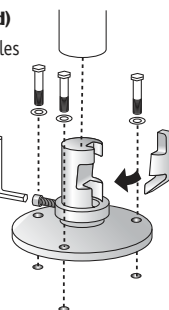


Made of cast gray iron, no concrete boring

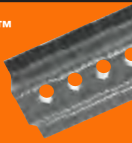
Part No.	Wt.	Sign Post Size
S238SR	12 lbs.	8 thru 16 Ga. Wall

EASY INSTALLATION: (Hardware Included)

Simply drill (3) holes in concrete using the base as guide. Secure Device to concrete with (3) bolts. Insert sign post and tighten set screw.



SNAP'n SAFE™ Breakaway Device for U Channel Sign Posts



PATENTED

360°
Shear
Point

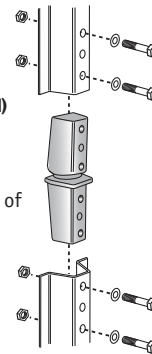


Made of cast gray iron, withstands winds of 120 mph.

Part No.	Wt.	Sign Post Size
SU800	4.0 lbs.	2#, 3#, 4#

EASY INSTALLATION: (Hardware Included)

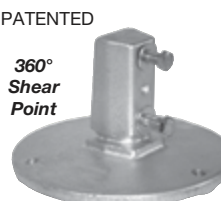
Simply attach SNAP'n SAFE Device to anchor post and bottom of sign post with (4) bolts.



U-CHANNEL SURFACE MOUNT

PATENTED

360°
Shear
Point

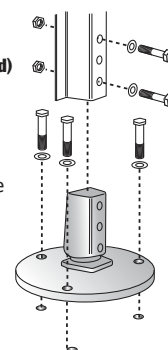


Made of cast gray iron, no concrete boring

Part No.	Wt.	Sign Post Size
SU800S	10 lbs.	2#, 3#, 4#

EASY INSTALLATION: (Hardware Included)

Simply drill (3) holes in concrete using the base as guide. Secure Device to concrete with (3) bolts. Attach sign post with (2) bolts.



Save Lives Prevent Injuries



DESIGNOVATIONS, INC.

7339 WILDWOOD ROAD
STILLMAN VALLEY, IL 61084

PHONE: 888-868-6588
FAX: 815-645-2389

EMAIL:
sales@designovations.com
www.designovations.com



Our Goal... *Safe Roads & Saving You Time and Money*

The Manual on Uniform Traffic Control Devices (MUTCD section 2A-19) which is the national standard used for all roads open to public travel, states that roadside sign supports in the clear zone SHALL be breakaway, yielding or shielded. This requirement - effective January 1, 2013 - applies to all roads, whether publicly or privately owned.

Vehicles involved in single vehicle crashes where the most harmful event was vehicle striking sign post by year and crash severity.

Calendar Year	Fatal	Crash Severity		All Crashes
		Injury	Property Damage Only	
2009	108	49,950	137,392	187,451
2010	89	45,343	114,447	159,879
2011	123	44,991	112,023	157,138
2012	86	46,063	128,358	174,507
2013	112	47,981	136,982	185,076
Total	518	234,329	629,203	864,050

Fatality analysis reporting system (FARS) 2009-2012 final and 2013 ARF General Estimates System (GES) 2009-2013

Note: the injury and property damage numbers are not actual counts, but estimates of the actual counts. The estimates are calculated from data obtained from a nationally representative sample of crashes collected through NHTSA's General Estimates System (GES). Estimates should be rounded to the nearest 1,000. Estimates less than 500 indicate that the sample size was too small to produce a meaningful estimate and should be rounded to 0.

TUFF'n Lite3 Composite Sign Posts

Eliminate heavy rusting steel posts forever!

Can be used in many applications...

- Road and Highway Signs*
 - Transit Signage
 - Informational Signage
 - Architectural Signage
 - Industrial Signage
 - Parking Lot Signage
 - Subdivision Signage
- *Must be used with SNAP'n SAFE™ Breakaway Couplers*

Product Benefits...

Lightweight - weighs less than steel posts, which reduces freight & handling costs.

Quick Installation - compatible with current 2" ground sockets for easy installation and replacement.

Maintenance Free - corrosion free, no painting required.

Color and Size Choice - stock colors include green, white, yellow & standard lengths of 6Ft, 7Ft, or 8Ft. (custom colors available with minimum run of 5,000 Ft).

User Friendly - easy to cut and drill holes.

Non-Conductive - will not conduct electricity or interfere with radar.

Shipping - UPS, FedEx and LTL options.



DESIGNOVATIONS, INC.
7339 WILDWOOD ROAD • STILLMAN VALLEY, IL 61084

PHONE: 888-868-6588 • FAX: 815-645-2389
EMAIL: sales@designovations.com • www.designovations.com